



Barkisland CE (VA) Primary School
WE BELIEVE, WE NURTURE, WE SUCCEED!

Barkisland CE (VA) Primary School

Accessibility Statement

The SEN and Disability Act 2001 extended the Disability Discrimination Act 1995 (DDA) to cover education. Since September 2002, the Governing Body has had three key duties towards disabled pupils, under Part 4 of the DDA:

1. not to treat disabled pupils less favourably for a reason related to their disability;
2. to make reasonable adjustments for disabled pupils, so that they are not at a substantial disadvantage;
3. to plan to increase access to education for disabled pupils.

This statement sets out the proposals of the Governing Body at Barkisland CE (va) Primary School to increase access to education for disabled pupils in the three areas required by the planning duties in the DDA:

- a) increasing the extent to which disabled pupils can participate in the school curriculum;
- b) improving the environment of the school to increase the extent to which disabled pupils can take advantage of education and associated services;
- c) improving the delivery to disabled pupils of information, which is provided in writing for pupils who are not disabled.

The School's Context

We are an independent school for boys and girls age range 4 years to 10 years. The school comprises of several buildings covering a small site, mostly of one storey construction.

The School's Aims

- We embrace a partnership between the school and home
- To offer each member the opportunity to grow in knowledge fostered through Christian values and guidance.
- To ensure every individual has a right to be part of a community where each member is valued and respected for their own worth irrespective of race, colour, creed or ability

- Our children will be helped to appreciate that they are members of the wider community in its richness and diversity
- Our curriculum provides a setting in which all children have an equal opportunity to grow in understanding and in the acquisition of skills, attitudes and values.

We are working within a national framework for educational inclusion provided by:

- Inclusive School (DfES 0774/2001)
- SEN & Disability Act 2001
- The SEN Revised Code of Practice 2002
- The Disability Discrimination Act (amended for school 2001)
- Code of Practice for Schools (Disability Rights Commission)
- ISI inspection

Objectives

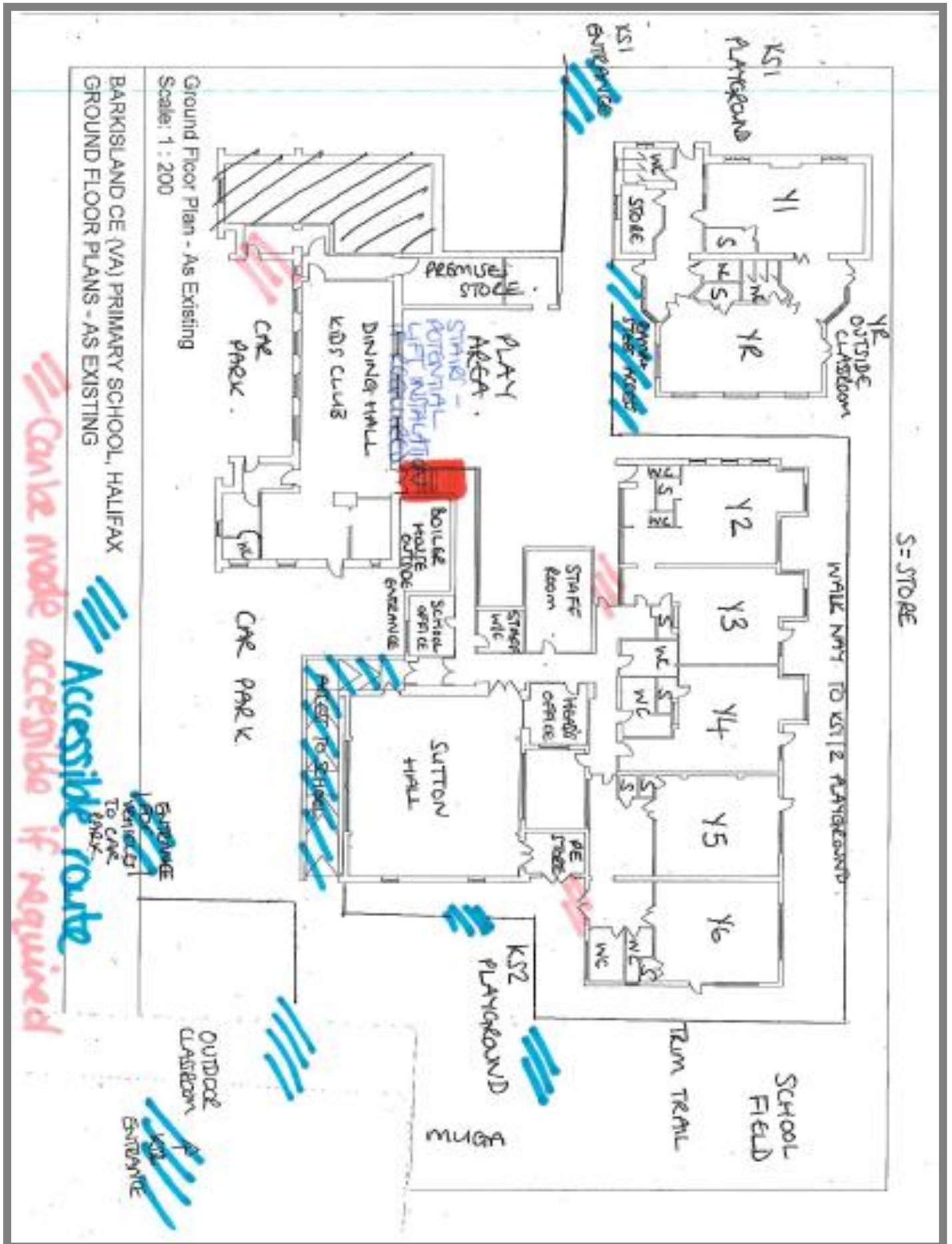
Barkisland CE (va) Primary School is committed to providing an environment that enables full curriculum access that values and includes all pupils, staff, parents and visitors regardless of their education, physical, sensory, social, spiritual, emotional and cultural needs. We are committed to taking positive action in the spirit of the Equality Act 2010 with regard to disability and to developing a culture of inclusion, support and awareness within the school.

The school recognises and values parents/carers knowledge of their child's disability and its effect on their ability to carry out everyday activities and respects the parent's and child's right to confidentiality. When a child or staff member requires access to our school with a disability we will endeavour to work closely with families to establish any required modifications.

The Accessibility Statement contains relevant actions to:-

- Increase access to the curriculum for pupils with a physical disability and/or sensory impairments, expanding the curriculum as necessary to ensure that pupils with a disability are as equally prepared for life as the able-bodied pupils; (If a school fails to do this they are in breach of their duties under the Equalities Act 2010); this covers teaching and learning and the wider curriculum of the school such as participation in after-school clubs, leisure and cultural activities or schools visits – it also covers the provision of specialist or auxiliary aids and equipment, which may assist these pupils in accessing the curriculum within a reasonable timeframe;
- Improve and maintain access to the physical environment of the school, adding specialist facilities as necessary – this covers improvements to the physical environment of the school and physical aids to access education within a reasonable timeframe;
- Improve the delivery of written information to pupils, staff, parents and visitors with disabilities; examples might include hand-outs, timetables, textbooks and information about the school and school events; the information should be made available in various preferred formats within a reasonable timeframe.

Plan of the school building showing areas of accessibility:



The plan shows the current accessible routes within school (**blue**) in addition to possible ramp routes (**pink**) if required, we currently have a portable ramp for these areas. Highlighted in **red** is current stairs access to our dining hall, this has potential to have a permanent lift installed if required.

At present, current accessible routes to the dining hall require a person to exit via the main entrance, down the ramp, through the carpark and into the dining hall via the Kids Club entrance.

All doorways to classrooms and the Sutton Hall are suitable for wider access for wheelchairs.

All external doors or gates are only accessible via keyless fob entry or coded padlocks to ensure the safety of our pupils.

Our Action Plan

At Barkisland the current accessibility needs suit all school users.

If required however we would improve accessibility in the following ways;

- Create permanent ramps where currently portable ramps are used if needed
- Install a lift to create access to the dining hall
- Install additional lighting
- Add visibility strips where required to steps / drops

Action Plan - devised 11.10.2017 by Amy Corp (Inclusion Manager) and Becky Schofield (HeadTeacher)

Written by: Amy Corp (Inclusion Manager)

October 2017

Reviewed: Nov 2020 – Tara Speight (Inclusion Manager)

Approved by the Governing Body: